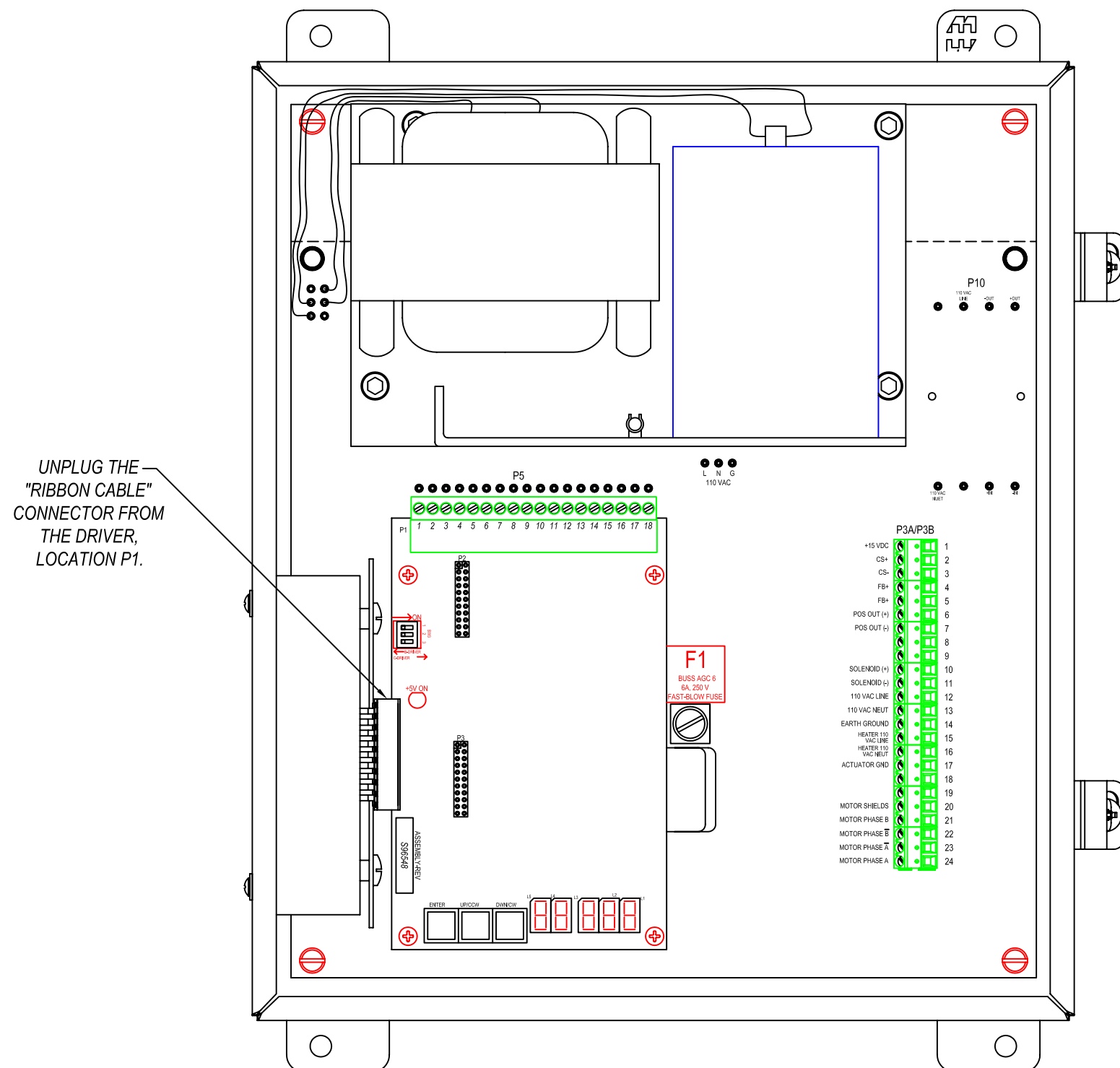
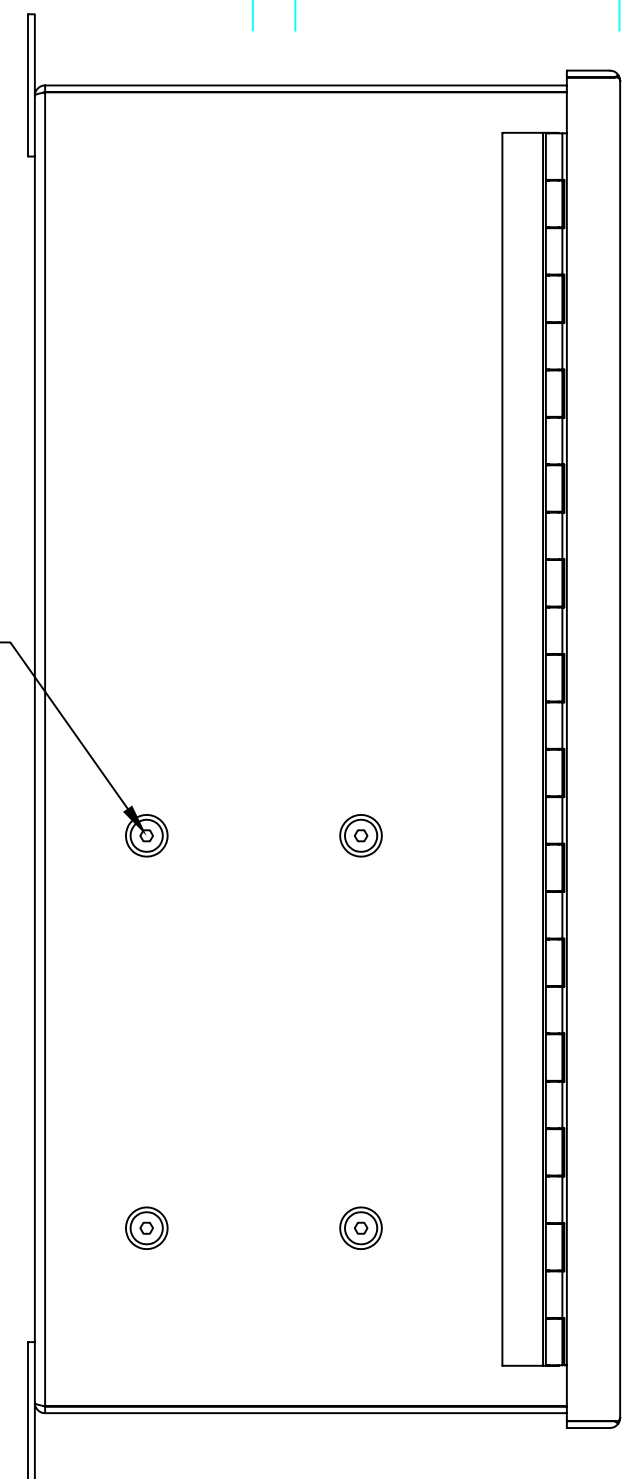


## REVISIONS

DISPOSITION= 1.REWORK 2.SCRAP 3.USE AS IS 4.RECORD CHANGE					
REV	DESCRIPTION	ECN NO	DISP.	DATE	APVD



STEPPER DRIVER IS MOUNTED TO THE LEFT SIDE WALL OF THE CONTROL ENCLOSURE. REMOVE THE MOUNTING HARDWARE, 4 PLACES.



### DRIVER REMOVAL NOTES:

1. Remove AC POWER from Control Enclosure.
2. Unplug the RIBBON CABLE connector from the driver, location P1.
3. The Driver is secured to the LEFT SIDE of the Enclosure using 4 pieces of 10-32 hardware with nylon washers. Remove the Mounting hardware for the Stepper Driver using a 1/8" Allen wrench. Tag this driver as defective and completely remove from the Control Enclosure.

UNLESS OTHERWISE SPECIFIED				CONTRACT No.	
TEMPLATE NO. REXA_B_H	REVISION A	DATE 020402	DIMENSIONS ARE IN INCHES .X .XX .XXX ANGLES	PREP KCL	06/08/10
1) BREAK ALL SHARP EDGES .015 2) O-RING GROOVES 63 FINISH OR BETTER 3) INSIDE CORNER RADII TO BE .030 MAX  THIS DRAWING AND ALL INFORMATION HEREIN IS THE PROPERTY OF REXA CORPORATION. IT IS CONFIDENTIAL AND MUST NOT BE MADE PUBLIC OR COPIED AND IS SUBJECT TO RETURN UPON DEMAND.				CHKR DPT	06/08/10
				MATERIAL	APVD
FINISH				MACHINE SURFACE	RAW STOCK
SCALE				NONE	SHEET 1 OF 3

W.BRIDGEWATER, MASSACHUSETTS

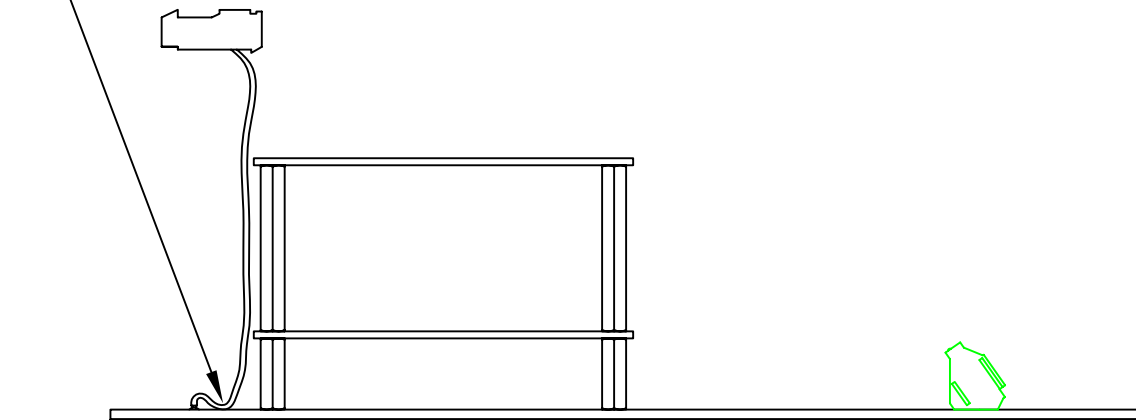
Stepper Driver Retro Fit Kit, ST Series Potted Replacement-  
Driver for CSA, X1, B-Electronics,  
Original Driver Removal Instructions

SIZE	D	NUMBER	K98325-000POT	REV	0
------	---	--------	---------------	-----	---

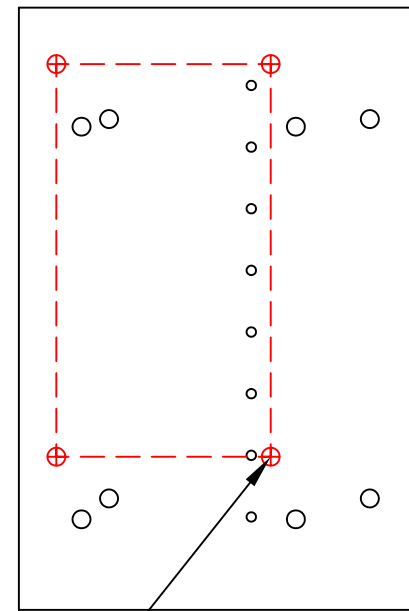
## REVISIONS

DISPOSITION= 1.REWORK 2.SCRAP 3.USE AS IS 4.RECORD CHANGE					
REV	DESCRIPTION	ECN NO	DISP.	DATE	APVD

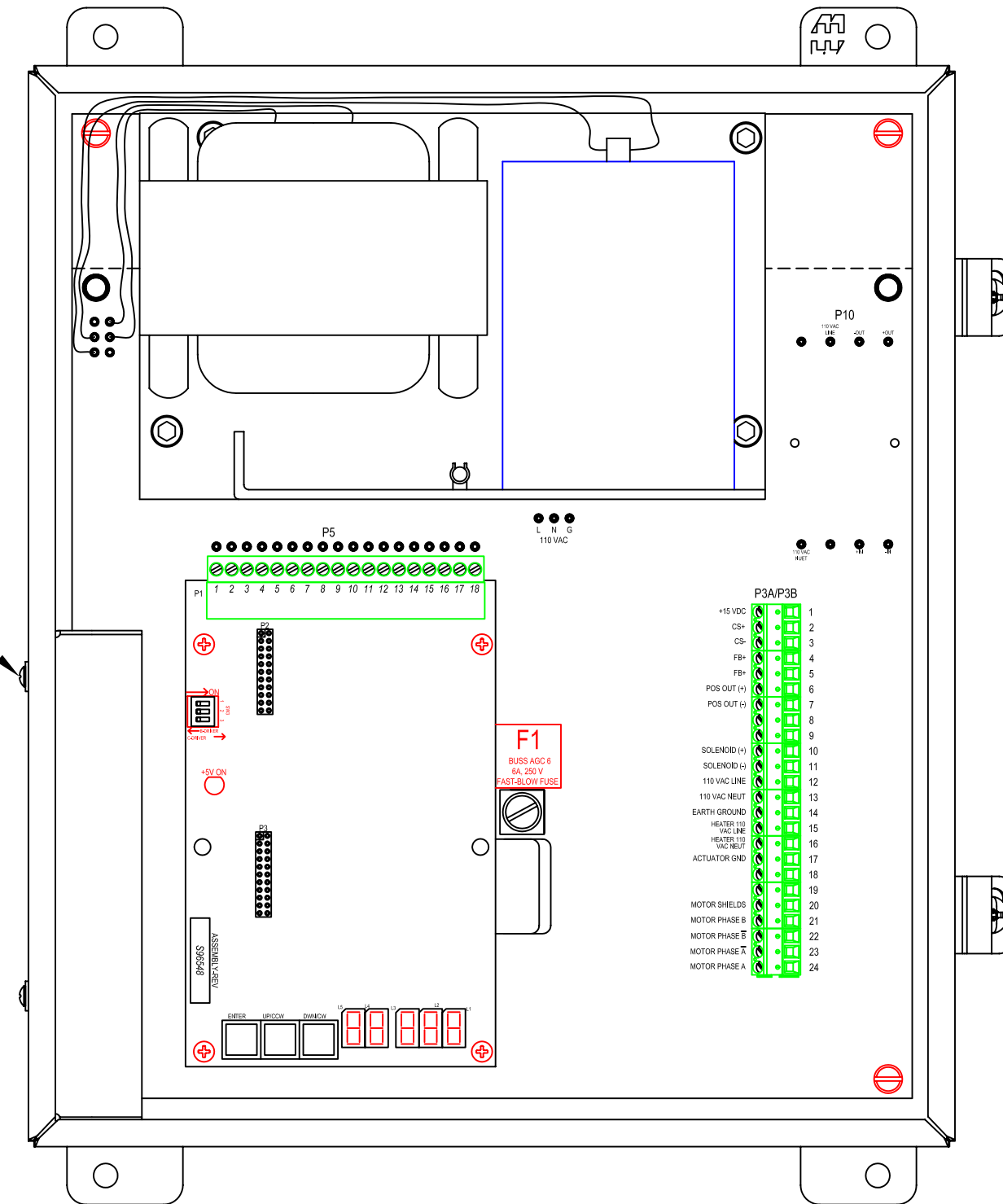
APPLY A FEW LAYERS OF ELECTRICAL TAPE TO THE BOTTOM 2" OF THE RIBBON CABLE THEN PRESS THE RIBBON CABLE AS FLAT AS POSSIBLE AGAINST THE MOTHERBOARD



REPLACEMENT STEPPER DRIVER WILL BE MOUNTED TO THE LEFT SIDE WALL OF THE CONTROL ENCLOSURE. SECURE THE MOUNTING HARDWARE FOR THE MOTOR DRIVER.



LOCATE REQUIRED MOUNTING HOLE PATTERN ON THE REPLACEMENT DRIVERS HEATSINK.



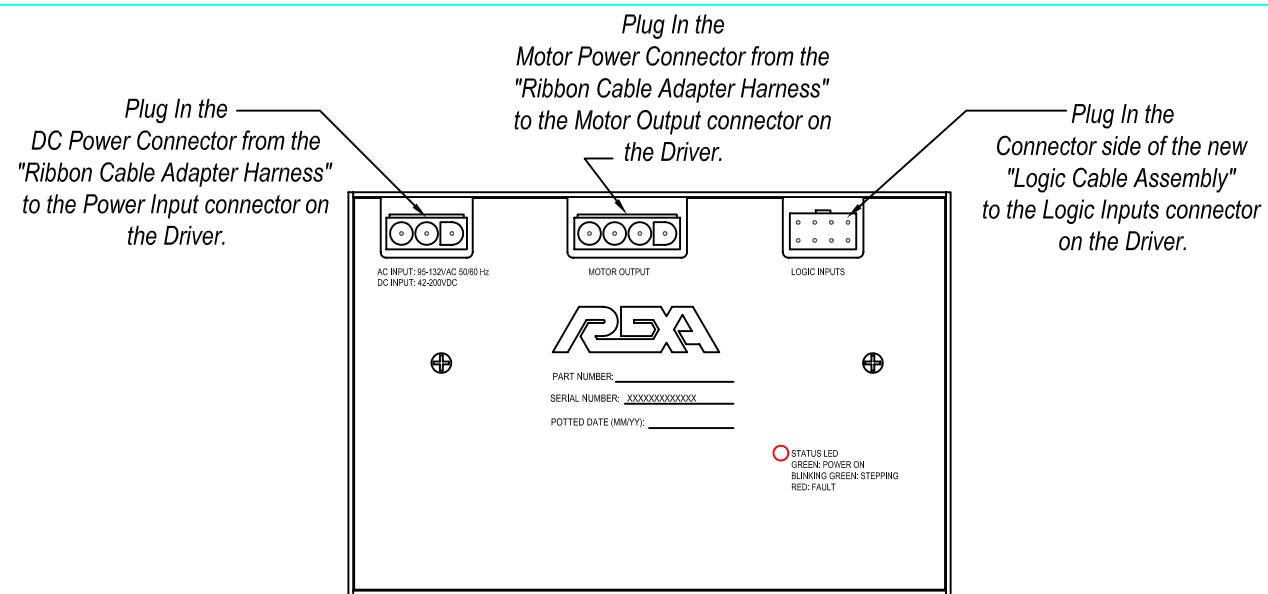
### DRIVER MOUNTING NOTES:

- Apply a few layers of Electrical Tape to the bottom 2" of the Ribbon Cable then Flatten the Ribbon Cable against the motherboard as much as possible to prevent any possible rubbing between the casing of the New Driver and the Ribbon Cable.
- Locate the mounting hole pattern required on the back of the replacement driver. Mount the replacement driver to the Left Side Wall of the Control Enclosure using the four screws & nylon washers that are provided with the replacement driver.

UNLESS OTHERWISE SPECIFIED				CONTRACT No.		REXA	
TEMPLATE NO.	REVISION	DATE	DIMENSIONS ARE IN INCHES	PREP	KCL	06/08/10	W.BRIDGEMATER, MASSACHUSETTS
REXA_B_H	A	020402	.X .XX .XXX ANGLES	CHKR	DPT	06/08/10	
1) BREAK ALL SHARP EDGES .015 2) O-RING GROOVES 63 FINISH OR BETTER 3) INSIDE CORNER RADII TO BE .030 MAX			MATERIAL	APVD			Stepper Driver Retro Fit Kit, ST Series Potted Replacement- Driver for CSA, X1, B-Electronics, Replacement Driver Mounting Instructions
THIS DRAWING AND ALL INFORMATION HEREIN IS THE PROPERTY OF REXA CORPORATION. IT IS CONFIDENTIAL AND MUST NOT BE MADE PUBLIC OR COPIED AND IS SUBJECT TO RETURN UPON DEMAND.			FINISH	APVD			SIZE D NUMBER K98325-000POT REV 0
				MACHINE SURFACE	RAW STOCK	✓	SCALE NONE SHEET 2 OF 3

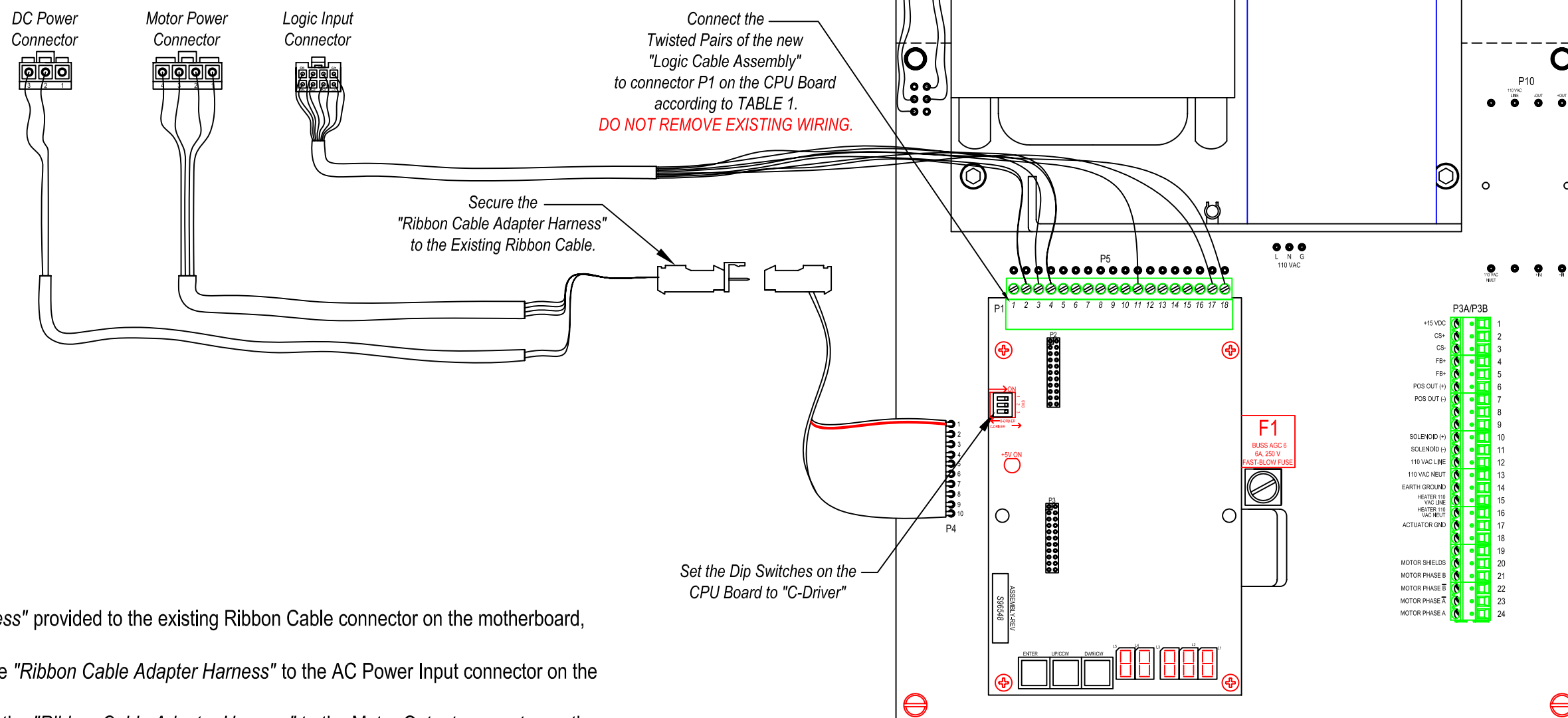
## REVISIONS

DISPOSITION= 1.REWORK 2.SCRAP 3.USE AS IS 4.RECORD CHANGE					
REV	DESCRIPTION	ECN NO	DISP.	DATE	APVD



**TABLE 1**

Wire Color		Logic Connector Position	Signal Name	CPU Connector Position
RED	Twisted Pair	5	DIR+	3
BLACK	Twisted Pair	1	DIR-	2
BLUE	Twisted Pair	7	ENABLE+	17
BLACK	Twisted Pair	3	ENABLE-	2
GREEN	Twisted Pair	6	STEP+	11
BLACK	Twisted Pair	2	STEP-	4
WHITE	Twisted Pair	8	FAULT+	18
BLACK	Twisted Pair	4	FAULT-	4



**REPLACEMENT DRIVER WIRING NOTES:**

1. Secure the "Ribbon Cable Adapter harness" provided to the existing Ribbon Cable connector on the motherboard, Location P4.
2. Plug In the DC Power Connector from the "Ribbon Cable Adapter Harness" to the AC Power Input connector on the Driver.
3. Plug In the Motor Power Connector from the "Ribbon Cable Adapter Harness" to the Motor Output connector on the Driver.
4. Connect the Twisted Pairs of the New Logic Cable Assembly to the CPU Board location P1 according to Table 1. **DO NOT REMOVE THE EXISTING WIRING AT CONNECTOR P1.**
5. Plug In the Connector side of the new "Logic Cable Assembly" to the Logic Inputs connector on the Driver.
6. Set the Dip Switches on the CPU Board location SW3 to "C-Driver".
7. Verify Operation in LOCAL Mode.

UNLESS OTHERWISE SPECIFIED				CONTRACT No.		REXA	
TEMPLATE NO. REXA_B_H	REVISION A	DATE 020402	DIMENSIONS ARE IN INCHES .X .XX .XXX ANGLES	PREP KCL	DATE 06/08/10	W.BRIDGEWATER, MASSACHUSETTS	
1) BREAK ALL SHARP EDGES .015 2) O-RING GROOVES 63 FINISH OR BETTER 3) INSIDE CORNER RADII TO BE .030 MAX				CHKR DPT	DATE 06/08/10	Stepper Driver Retro Fit Kit, ST Series Potted Replacement- Driver for CSA, X1, B-Electronics, Replacement Driver Wiring Instructions	
				APVD			
THIS DRAWING AND ALL INFORMATION HEREIN IS THE PROPERTY OF REXA CORPORATION. IT IS CONFIDENTIAL AND MUST NOT BE MADE PUBLIC OR COPIED AND IS SUBJECT TO RETURN UPON DEMAND.				MACHINE SURFACE	RAW STOCK	SIZE D	NUMBER K98325-000POT
						SCALE NONE	SHEET 3 OF 3